

**The 19th International Conference on
“Technical and Physical Problems of Engineering”
ICTPE-2023
31 October 2023
*International Organization of IOTPE***



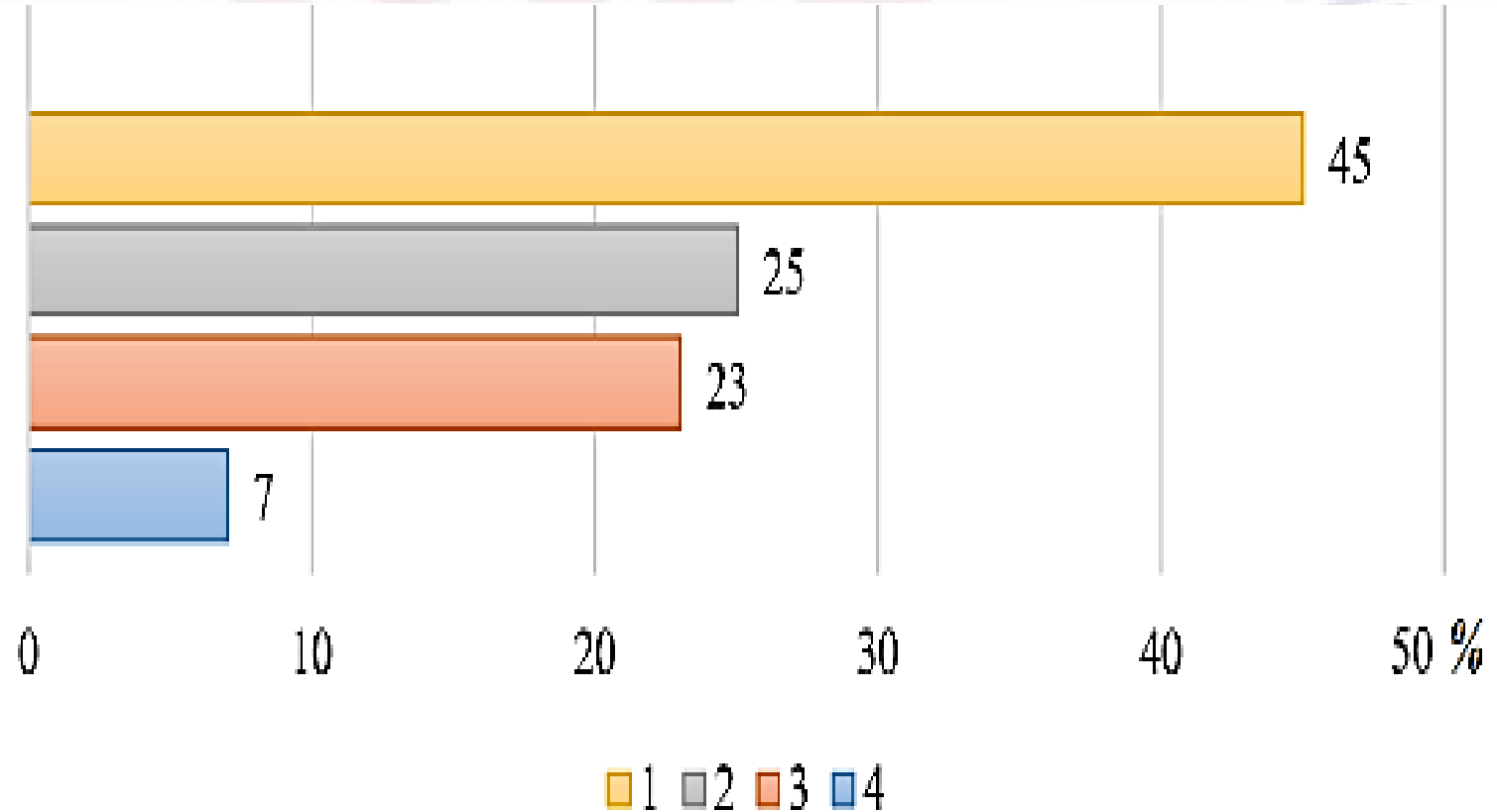
**ENERGY PASSPORT OF A BUILDING AS AN INDICATOR OF ITS ENERGY
EFFICIENCY**

N.Y. Mammadov S.M. Akbarova

*Department Construction of Engineering Systems and Facilities, Azerbaijan University of Architecture and
Construction, Baku, Azerbaijan*

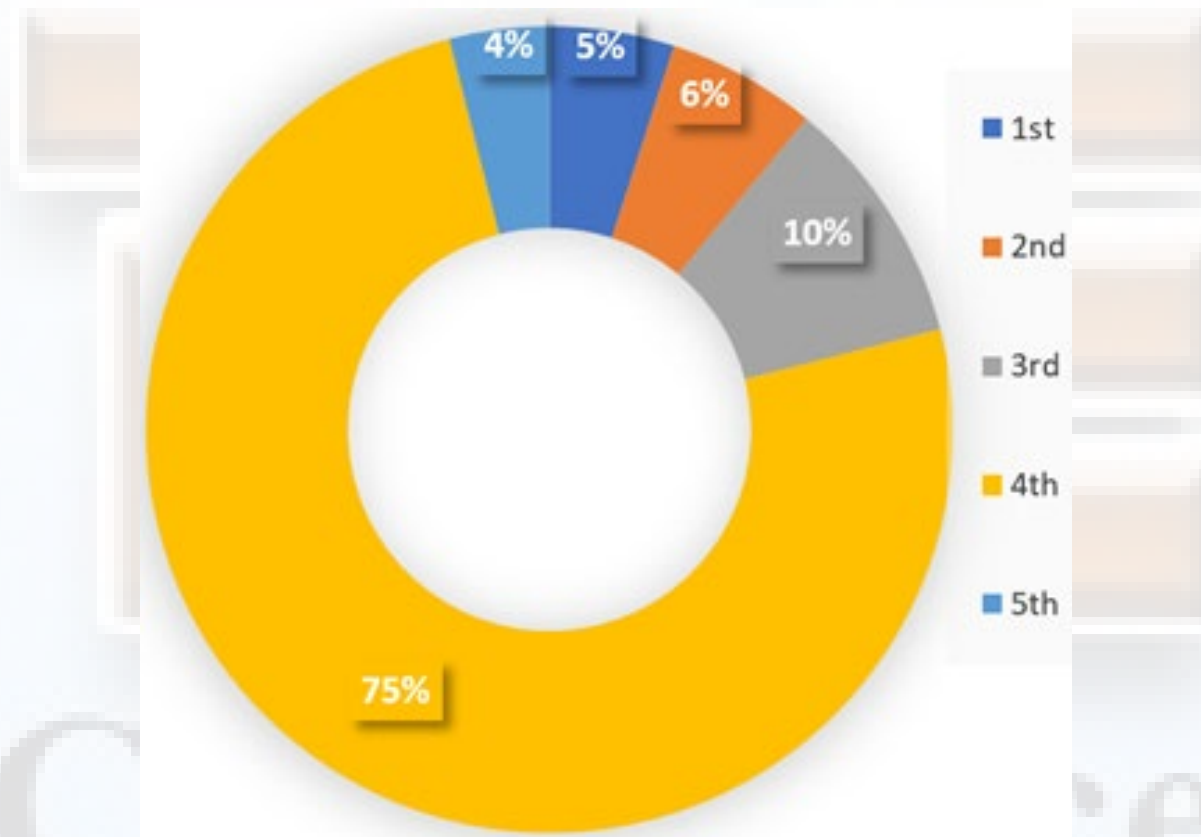
The 19th International Conference on “Technical and Physical Problems of Engineering” (ICTPE-2023)

Introduction

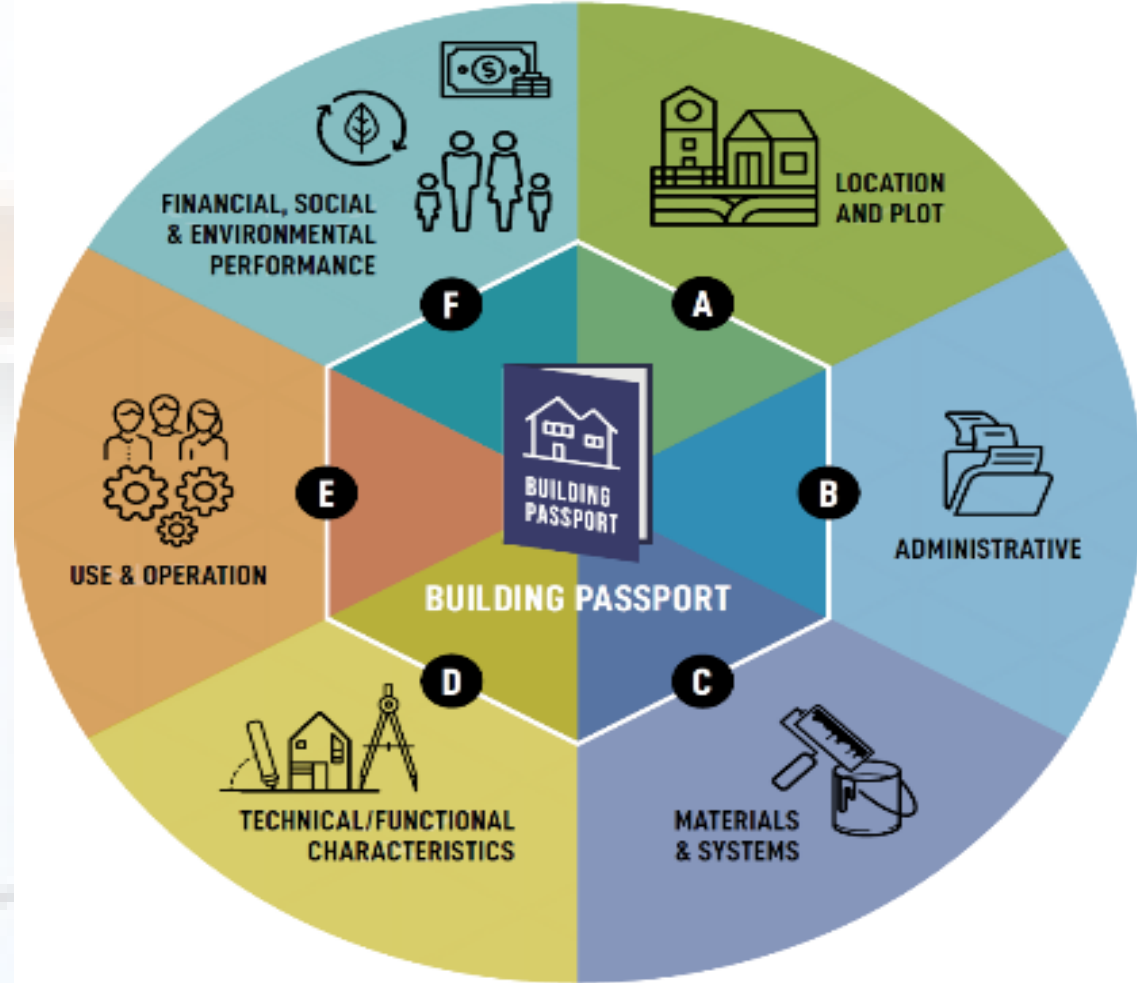


The main energy consumers in Azerbaijan: 1- buildings, 2- industrial facilities, 3- transport, 4- others

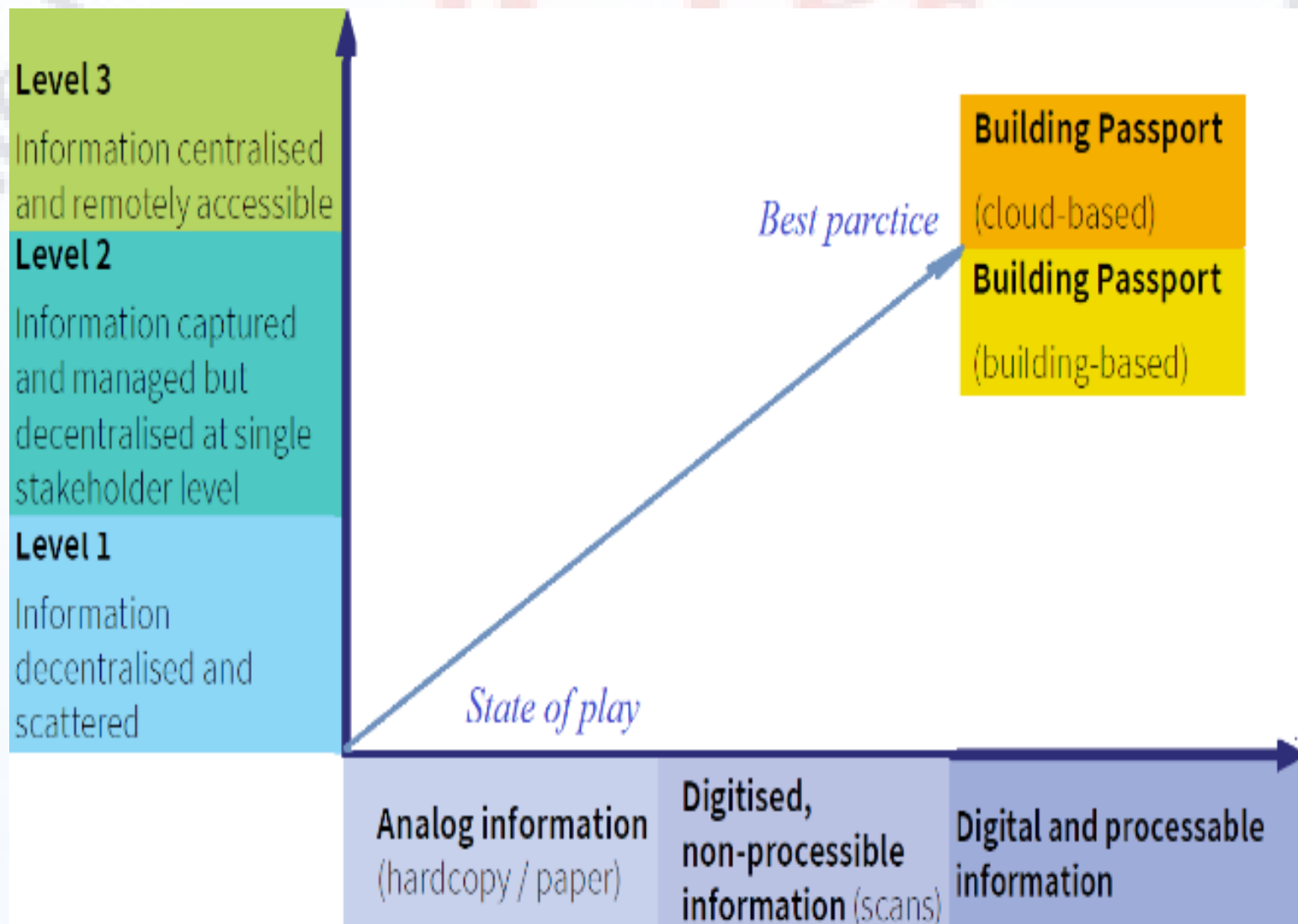
The 19th International Conference on “Technical and Physical Problems of Engineering” (ICTPE-2023)

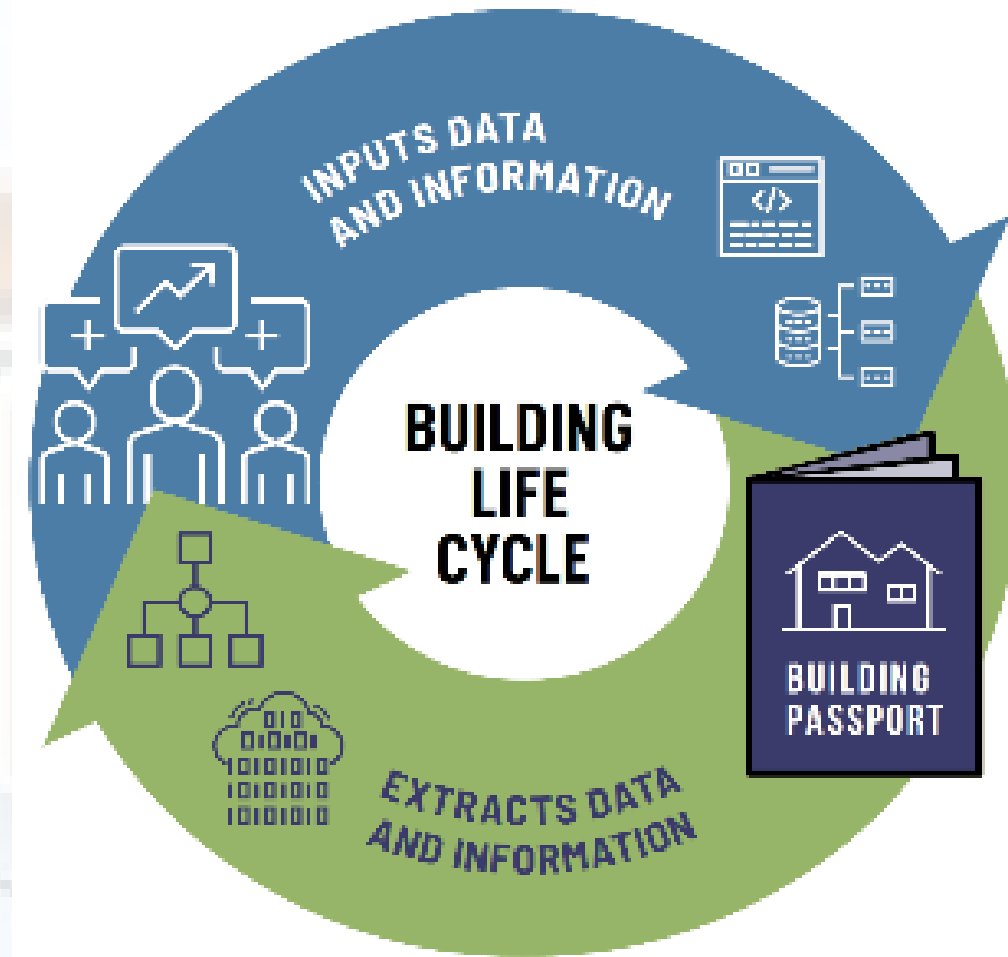


Building life cycle stages and their percentages of energy consumption

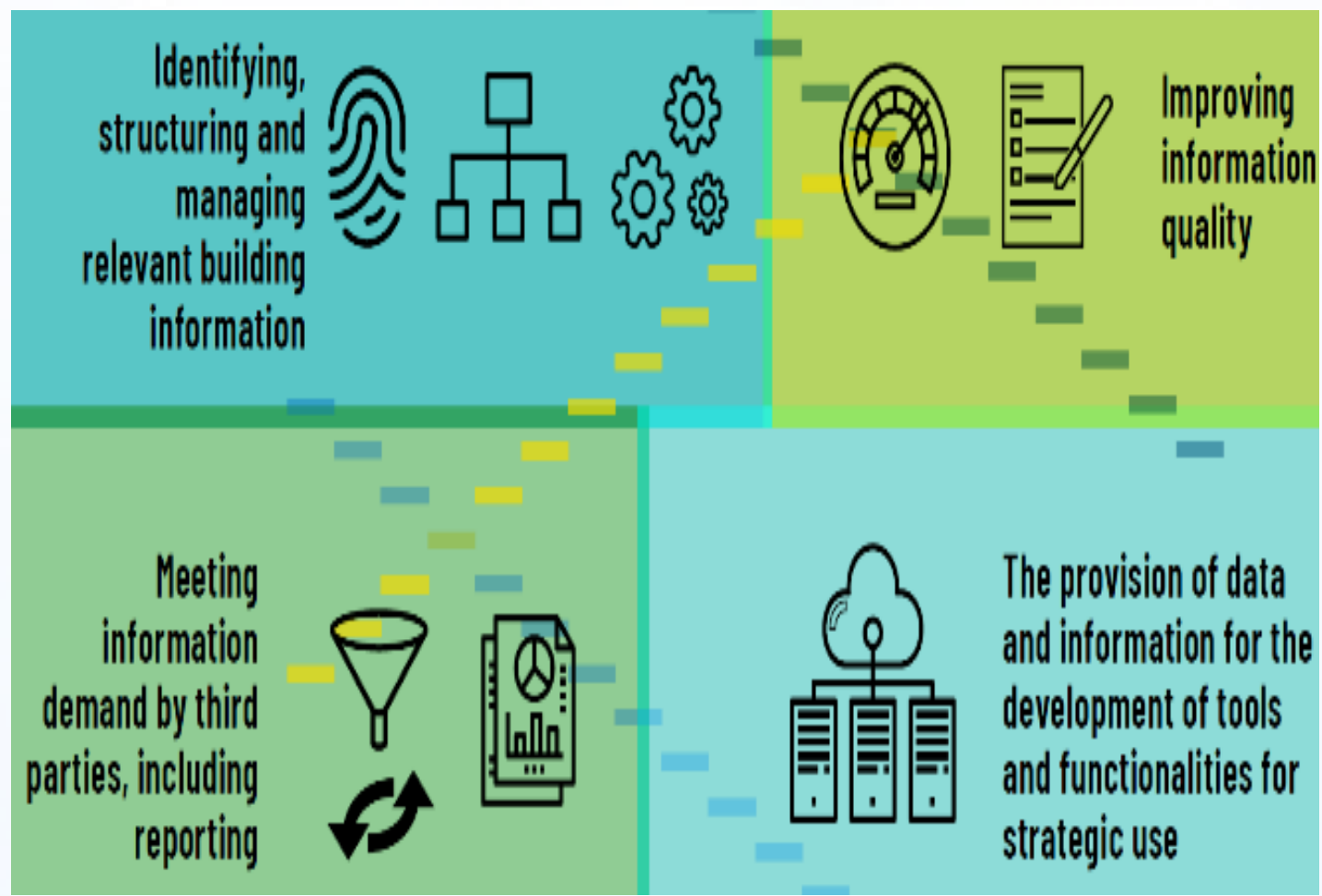


Categories and component parts of BEP





ICTPE



Energy efficiency rating class of buildings

Energy efficiency class of buildings	Deviation value %	Specific annual rate of building energy resources, (kWh)/m ² at baseline	
		for a 5 -storey building - 109.56	for a 9 -storey building
A++	-60	47.83	44.98
A+	-50	55.82	53.59
A	-40	65.78	63.11
B	-30	76.74	75.67
C	-15	93.28	89.23
D	0	109.56	104.72
E	+25	137.06	131.27
F	≤ 50	184.47	167.99
G	≥ 50	184.47	167.99

The number of total specific annual energy rate of buildings by efficiency rating classes

CONCLUSIONS

ICTPE

